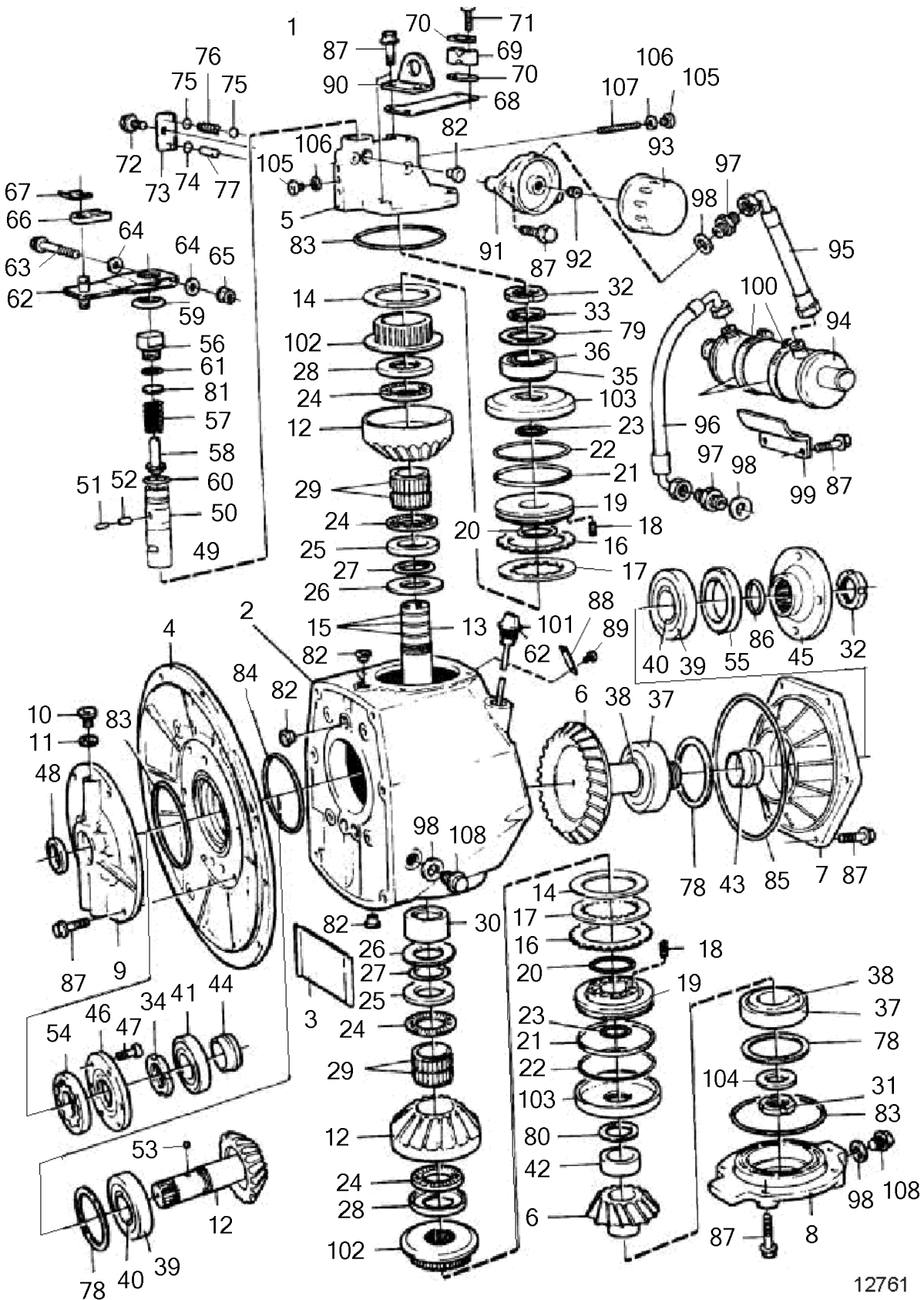


HS1A, 1.96, HS1A, 2.62



HS1A, 1.96, HS1A, 2.62

REF	PART NO.	QTY	DESCRIPTION	NOTES
1	873171	1	Transmission, 1.96:1	
	3803501	1	Lower gear, exch, 1.96:1, exch	
	873172	1	Transmission, 2.62:1	
	3803508	1	Lower gear, exch, 2.62:1, exch	
2		1	• Gear housing	
3	872574	1	• Shield	
4	872501	1	• Cardboard tube	
5	872725	1	• Valve housing	
6	872510	1	• Drive gear set, 1.96:1	
	872534	1	• Drive gear set, 2.62:1	
7	872505	1	• Bearing housing	
8	872506	1	• Bearing housing	
9	3851512	1	• Pump	
10	945065	3	• Plug	
11	969011	3	• Gasket	
12	872507	1	• Drive gear set	
13	872515	1	• Shaft	
14	872794	2	• Disc spring	
15		3	• Piston ring	Incl. in kit 876589
16		14	• Disc	Incl. in disc kit 876591-9
17		16	• Disc	Incl. in disc kit 876591-9
18	872580	26	• Spring	
19	872518	2	• Piston	
20	977891	2	• O-ring	Incl. in kit 876589
21		2	• Piston ring	Incl. in kit 876589
22		2	• O-ring	Incl. in kit 876589
23	872522	2	• Lock ring	
24	184175	4	• Needle roller assemb	
25	184239	2	• Raceway washer	
26	872581	2	• Spring washer	
27	956000	2	• O-ring	
28	872570	2	• Thrust washer	
29	184798	4	• Needle roller assemb	
30	872587	1	• Roller bearing	
31	969072	1	• Round nut	
32	969073	2	• Round nut	
33	872520	1	• Washer	
34	969074	1	• Round nut	
35	181304	1	• Cup	
36	181303	1	• Inner ring	
37	183403	2	• Cup	
38	183649	2	• Inner ring	
39	181036	2	• Cup	
40	184797	2	• Inner ring	
41	183232	1	• Roller bearing	
42	872521	1	• Spacer sleeve	
43	872568	1	• Pretensioning sleeve	
44	872569	1	• Pretensioning sleeve	
45	872523	1	• Flange	
46		1	• Cover	Included in 3851512
47	942001	6	• Hex. socket screw	
48	6842273	1	• Lip seal	
49	872889	1	• Valve	
50		1	• • Valve	
51		1	• • Sleeve	
52		1	• • Magnet	
53	192601	1	• Ball	
54		1	• Pump element tappet	Included in 3851512
55	872701	1	• Sealing ring	
56	872525	1	• Housing	
57	872585	1	• Spring	
58	873519	1	• Service kit	
59	872567	1	• Cardboard tube	
60	977890	1	• O-ring	
61	925058	2	• O-ring	
62	872526	1	• Intermediate lever	

HS1A, 1.96, HS1A, 2.62

REF	PART NO.	QTY	DESCRIPTION	NOTES
63	955252	1	• Hexagon screw	
64	940090	2	• Washer	
65	963104	1	• Lock nut	
66	872075	1	• Anchorage	
67	968631	1	• E-circlip	
68	872528	1	• Bracket	
69	872074	1	• Retainer	
70	872076	2	• Washer	
71	956083	2	• Cross recessed screw	
72	965175	1	• Flange screw	
73	872529	1	• Cardboard tube	
74	955983	2	• O-ring	
75	183801	1	• Ball	
76	872586	1	• Spring	
77	184796	1	• Needle roller	
78	977913		• Shim, 0.10 mm	As required
	977914		• Shim, 0.15 mm	As required
	977915		• Shim, 0.35 mm	As required
79	977910		• Shim, 0.10 mm	As required
	977911		• Shim, 0.15 mm	As required
	977912		• Shim, 0.5 mm	As required
80	978912		• Shim, 0.30 mm	As required
	978913		• Shim, 0.40 mm	As required
	978914		• Shim, 0.45 mm	As required
	978915		• Shim, 0.50 mm	As required
	978916		• Shim, 0.55 mm	As required
			• Shim, 0.35 mm	As required
81	978917		• Shim, 0.50 mm	As required
82	422413	11	• Sealing ring	
83	925263	3	• O-ring	
84	925260	1	• O-ring	
85	948866	1	• O-ring	
86	925065	1	• O-ring	
87	947760	28	• Flange screw	
88		1	• Plate	
89	950885	2	• Drive screw	
90		1	• Lifting eye	
91	872605	1	• Bracket	
92	840274	1	• Nipple	
93	834337	1	• Oil filter	
94	872626	1	• Oil cooler	
95	872637	1	• Hose	
96	872638	1	• Hose	
97	192639	2	• Nipple	
98	947624	4	• Gasket	
99	872615	1	• Bracket	
100	961674	2	• Hose clamp	
101	872538	1	• Dipstick	
102	872608	2	• Hub	
103	872611	2	• Cylinder	
104	978906	1	• Support washer	
105	977917	3	• Plug	
106	947620	3	• Gasket	
107	872577	1	• Oil strainer	
108	1381498	2	• Plug	

HS1A, 1.96, HS1A, 2.62

REF	PART NO.	QTY	DESCRIPTION	NOTES
1	876588	1	Gasket kit	
	6842273	1	• Lip seal	
	872701	1	• Sealing ring	
	422413	11	• Sealing ring	
	925058	2	• O-ring	
	925065	1	• O-ring	
	925260	1	• O-ring	
	925263	3	• O-ring	
	947620	3	• Gasket	
	947624	4	• Gasket	
	948866	1	• O-ring	
	955983	2	• O-ring	
	956000	2	• O-ring	
	977890	1	• O-ring	
	969072	1	• Round nut	
	969073	1	• Round nut	
	969074	1	• Round nut	
	876591	1	Disc kit	Replaced by 3885079
		8	• Disc	
		7	• Disc	
		1	• Washer	
	3885079	1	Disc kit	
		8	Friction disc	
		5	Steel disc	
		4	Steel disc	
	876589	1	Piston kit	
		2	• Piston ring	
		3	• Piston ring	
		2	• O-ring	
	977891	2	• O-ring	

--

DESCRIPTION	SEE SEC.	NOTES
Inboard Transmission	11270	HS1A, 1.96, HS1A, 2.62
Repair Kits	11155	HS1A, 1.96, HS1A, 2.62



REF	DESCRIPTION	SEE SEC.
44	Transmissions	44

